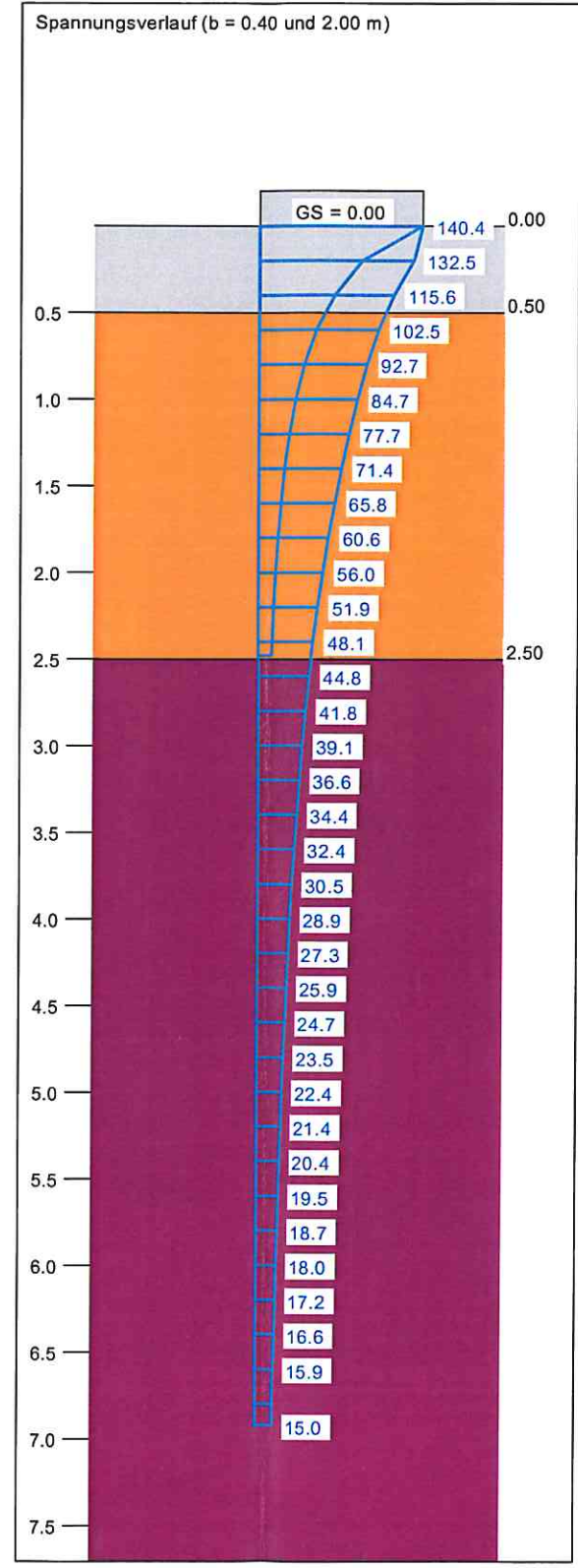
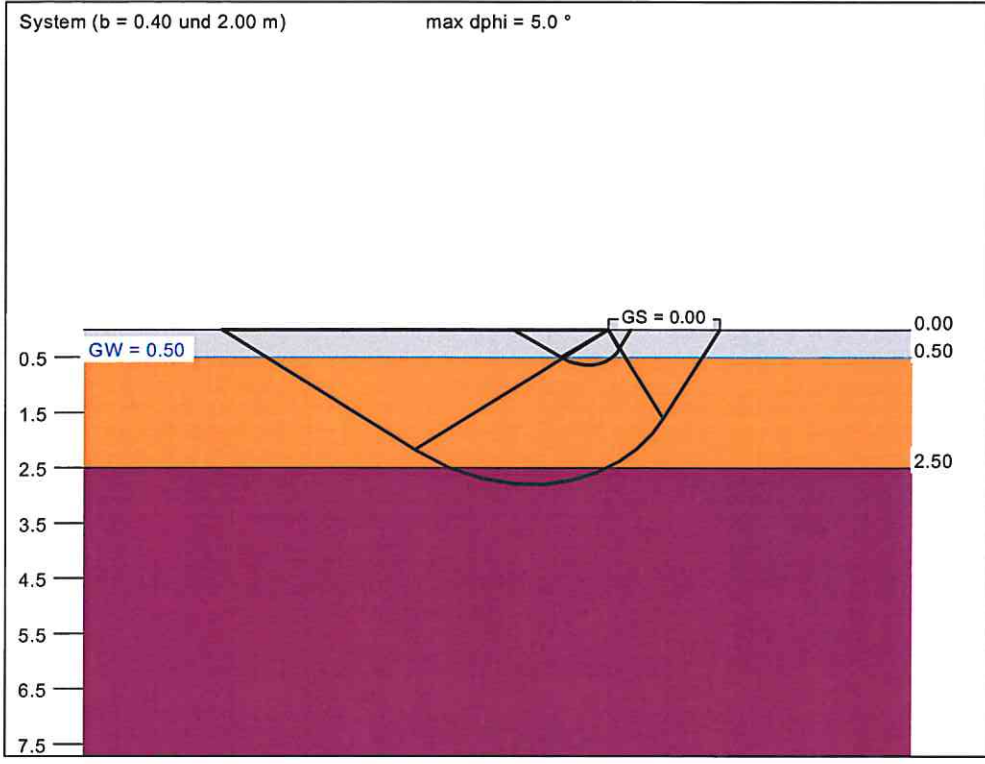


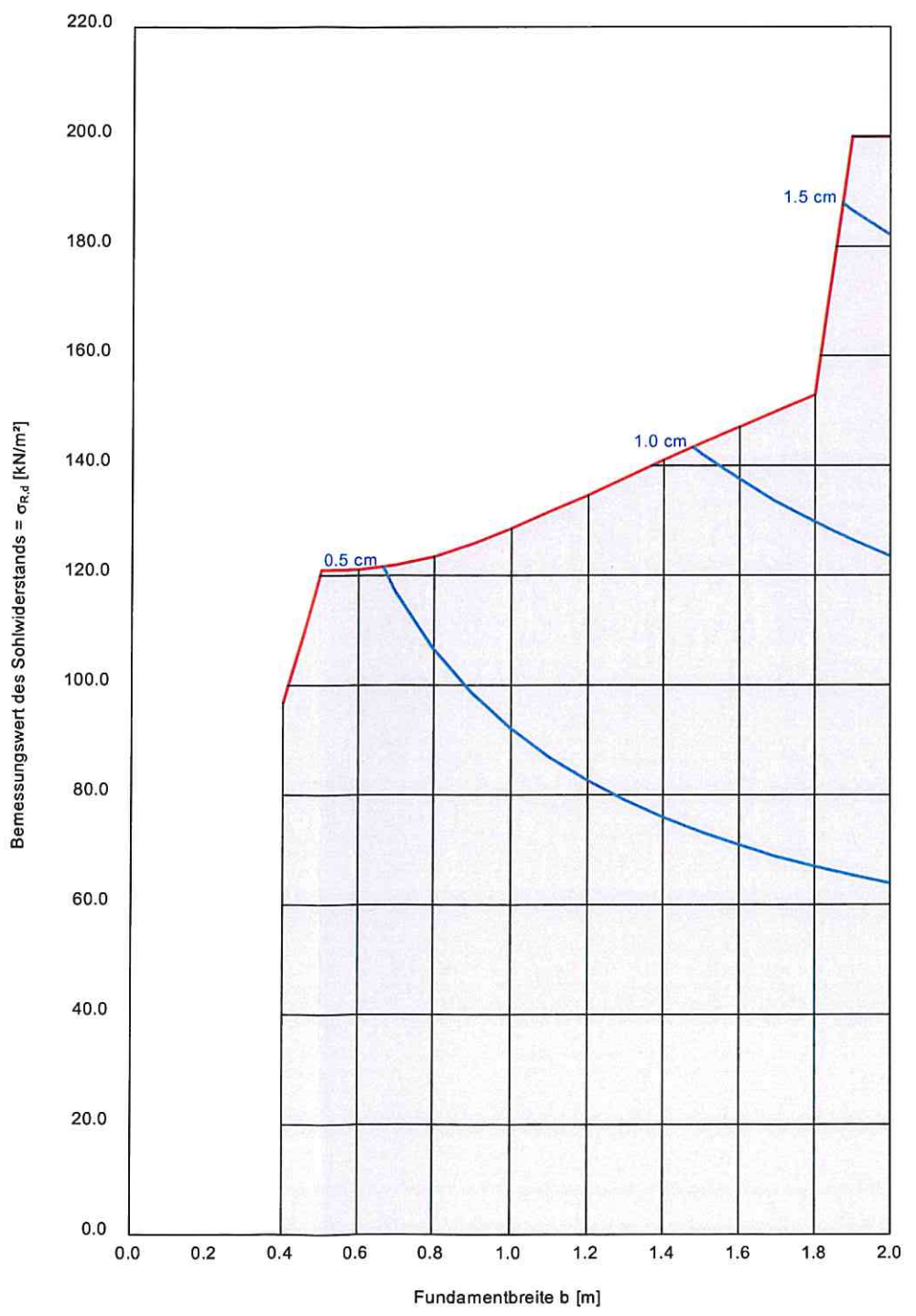
Boden	γ [kN/m ³]	γ' [kN/m ³]	ϕ [°]	c [kN/m ²]	E_s [MN/m ²]	v [-]	Bezeichnung
	21.0	12.0	37.5	0.0	120.0	0.00	Bodenaustausch
	19.0	9.0	25.0	5.0	10.0	0.00	HB 3 Feinsande
	20.5	10.5	27.5	25.0	65.0	0.00	HB 4 Tiefere OSM



Berechnungsgrundlagen:
 Norm: EC 7
 BS: DIN 1054: BS-P
 Grundbruchformel nach DIN 4017:2006
 Teilsicherheitskonzept (EC 7)
 Streifenfundament (a = 10.00 m)
 $\gamma_{R,v} = 1.40$
 $\gamma_G = 1.35$
 $\gamma_Q = 1.50$
 Anteil Veränderliche Lasten = 0.500

$\gamma_{(G,Q)} = 0.500 \cdot \gamma_Q + (1 - 0.500) \cdot \gamma_G$
 $\gamma_{(G,Q)} = 1.425$
 $\sigma_{R,d}$ auf 200.00 kN/m² begrenzt
 Gründungssohle = 0.00 m
 Grundwasser = 0.50 m
 Grenztiefe mit $p = 20.0\%$
 Grenztiefen spannungsvariabel bestimmt

— Sohldruck
 — Setzungen



a [m]	b [m]	$\sigma_{R,d}$ [kN/m ²]	$R_{n,d}$ [kN/m]	$\sigma_{E,k}$ [kN/m ²]	s [cm]	cal ϕ [°]	cal c [kN/m ²]	γ_2 [kN/m ²]	σ_0 [kN/m ²]	t_g [m]	UK LS [m]	k_s [MN/m ²]
10.00	0.40	96.8	38.7	67.9	0.26	29.9 *	1.87	19.84	0.00	2.48	0.63	26.2
10.00	0.50	121.0	60.5	84.9	0.40	30.0 *	2.55	18.34	0.00	3.04	0.79	21.4
10.00	0.60	121.1	72.7	85.0	0.46	29.0 *	2.88	17.37	0.00	3.30	0.92	18.5
10.00	0.70	122.0	85.4	85.6	0.52	28.2 *	3.14	16.56	0.00	3.54	1.04	16.4
10.00	0.80	123.4	98.7	86.6	0.58	27.6 *	3.34	15.89	0.00	3.77	1.17	14.9
10.00	0.90	125.8	113.2	88.3	0.64	27.3 *	3.50	15.31	0.00	4.01	1.30	13.7
10.00	1.00	128.6	128.6	90.2	0.71	27.0 *	3.64	14.81	0.00	4.23	1.43	12.8
10.00	1.10	131.6	144.8	92.4	0.77	26.7 *	3.76	14.38	0.00	4.46	1.56	12.0
10.00	1.20	134.6	161.5	94.5	0.83	26.6 *	3.85	14.01	0.00	4.68	1.70	11.4
10.00	1.30	137.8	179.2	96.7	0.89	26.4 *	3.94	13.69	0.00	4.89	1.83	10.8
10.00	1.40	141.0	197.4	98.9	0.95	26.3 *	4.01	13.40	0.00	5.10	1.96	10.4
10.00	1.50	144.0	216.0	101.1	1.01	26.2 *	4.07	13.14	0.00	5.30	2.10	10.0
10.00	1.60	147.0	235.2	103.2	1.07	26.1 *	4.13	12.92	0.00	5.50	2.23	9.6
10.00	1.70	150.0	255.0	105.2	1.13	26.0 *	4.18	12.71	0.00	5.69	2.36	9.3
10.00	1.80	152.9	275.2	107.3	1.19	26.0 *	4.22	12.53	0.00	5.88	2.50	9.0
10.00	1.90	200.0	380.0	140.4	1.61	26.1 *	8.09	12.36	0.00	6.78	2.65	8.7
10.00	2.00	200.0	400.0	140.4	1.65	26.2 *	9.58	12.23	0.00	6.93	2.79	8.5

* phi wegen 5° Bedingung abgemindert
 $\sigma_{E,k} = \sigma_{01k} / (\gamma_{R,v} \cdot \gamma_{(G,Q)}) = \sigma_{01k} / (1.40 \cdot 1.43) = \sigma_{01k} / 1.99$ (für Setzungen)
 Verhältnis Veränderliche(Q)/Gesamlasten(G+Q) [-] = 0.50